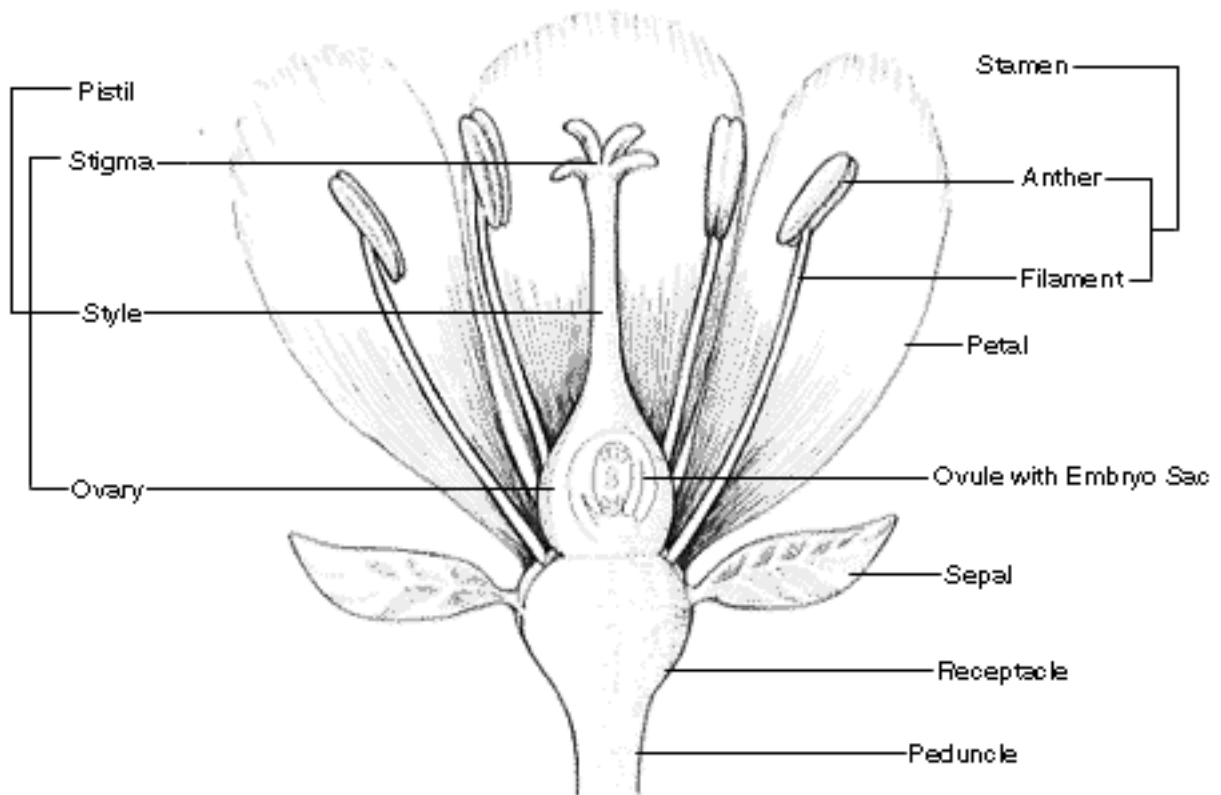


# Plant Morphology

## The Parts of a Flower



**Peduncle:** The stalk of a flower.

**Receptacle:** The part of a flower stalk where the parts of the flower are attached.

**Sepal:** The outer parts of the flower (often green and leaf-like) that enclose a developing bud.

**Petal:** The parts of a flower that are often conspicuously colored.

**Stamen:** The pollen producing part of a flower, usually with a slender filament supporting the anther.

**Anther:** The part of the stamen where pollen is produced.

**Pistil:** The ovule producing part of a flower. The ovary often supports a long style, topped by a stigma. The mature ovary is a fruit, and the mature ovule is a seed.

**Stigma:** The part of the pistil where pollen germinates.

**Ovary:** The enlarged basal portion of the pistil where ovules are produced.