

Classification of Mammals by Physical Characteristics

You are investigating ten species of mammals. Your assignment is to decide how closely related these species are to one another so that you can fill in the phylogenetic tree on the back of this page. To do this, you should think about what these animals look like and what you know about where they live, what they eat, etc.

Fill in the blank tree on the back of this page to show how these animals are related.

The ten species of mammals you will use to fill in the phylogenetic tree are:

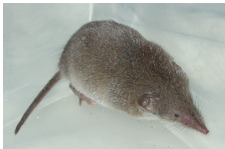
1. African Savannah Elephant
(*Loxodonta africana*)



2. Chimpanzee
(*Pan troglodytes*)



3. Common Shrew
(*Sorex araneus*)



4. Dog
(*Canis lupus*)



5. European Hedgehog
(*Erinaceus europaeus*)



6. Gray, Short-tailed Opossum
(*Monodelphis domestica*)



7. Horse
(*Equus caballus*)



8. Mouse
(*Mus musculus*)



9. Nine-banded Armadillo
(*Dasypus novemcinctus*)



10. Tenrec
(*Echinops telfairi*)





platypus



cow



macaque