

Nothing added -
negative control

Lab-cultured bacteria -
positive control

Samples
tested:

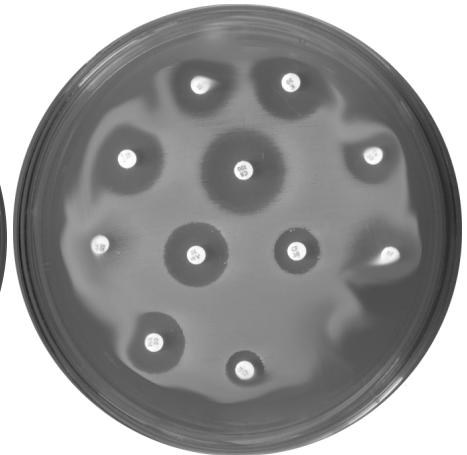
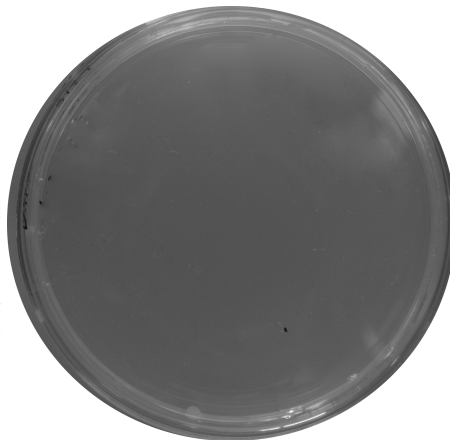


- A. water from a roadway
- B. boiled water
- C. fingerprints
- D. fingerprints after washing hands
- E. swab from wound of an infected patient
- F. swab from wound of an infected patient + antibiotic

1: _____

2: _____

3: _____



4: _____

5: _____

6: _____

