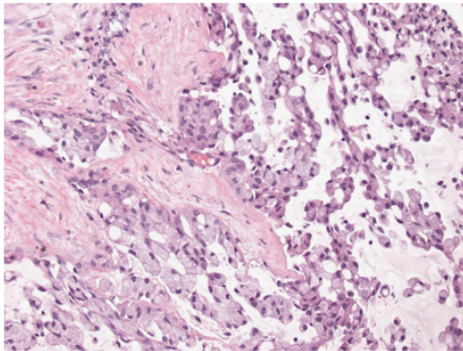
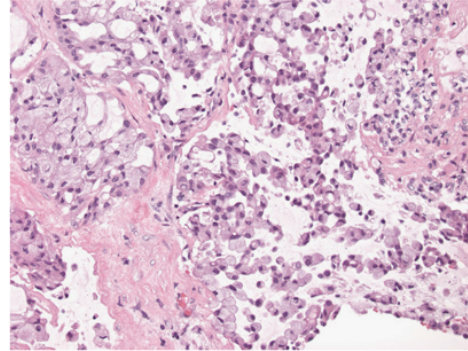


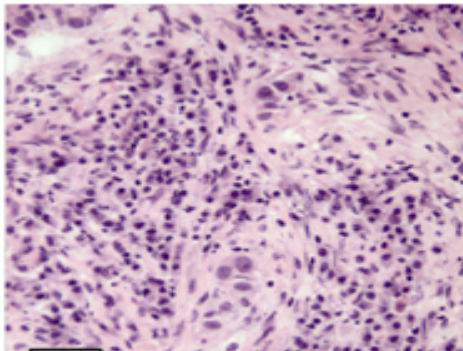
Below you see pictures of lung tissue, in three patients with lung cancer (as compared to tissue from a normal lung). In these images, the cell is shown as pink, and the DNA is shown as blue/purple. Describe your observations of what is similar, and what is different, between these images:



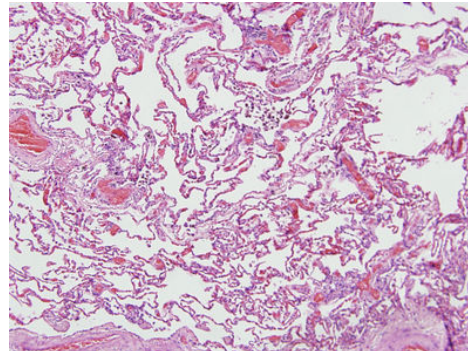
**Patient #1**



**Patient #2**



**Patient #3**



**Normal Lung**

**Observations:**