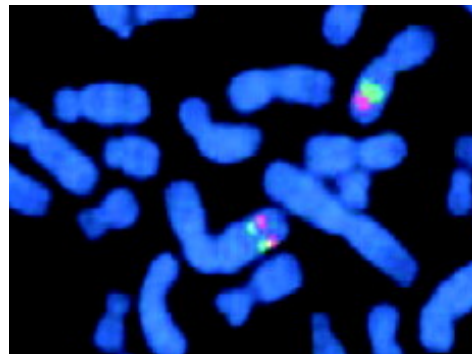
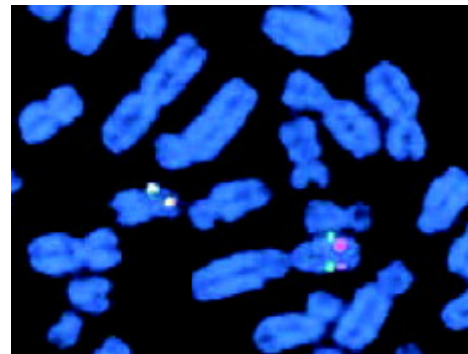


Rearrangements of Gene A and Gene B

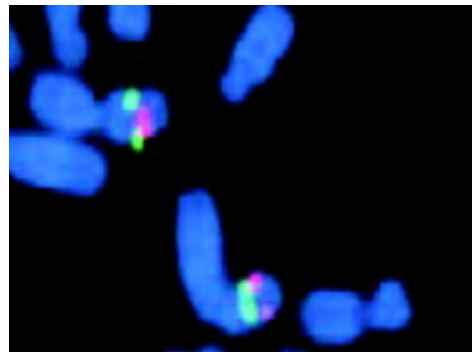
Gene A has been dyed red, and Gene B has been dyed green. If both genes come together at the same location due to a change in the DNA, then the area appears yellow.



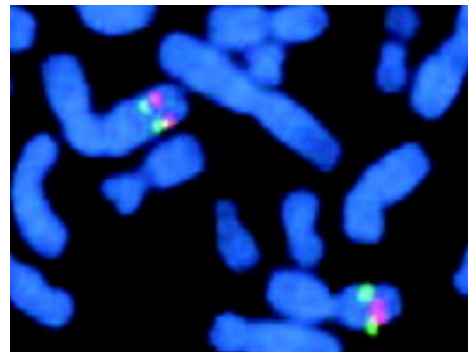
Patient #1



Patient #2



Patient #3



Normal Lung

1) Which patient(s) has a rearrangement of Genes A & B?

2) Are the two "sister" chromosomes in one pair of "sisters" identical (i.e. both red & green, or both yellow)? Answer for each pair of sisters; there are two pairs of sisters shown in each patient.

3) Are the two "homologs" in one pair of "homologs" identical (i.e. both red & green, or both yellow)? Answer for each pair of homologs; there is one pair of homologs shown in each patient.