

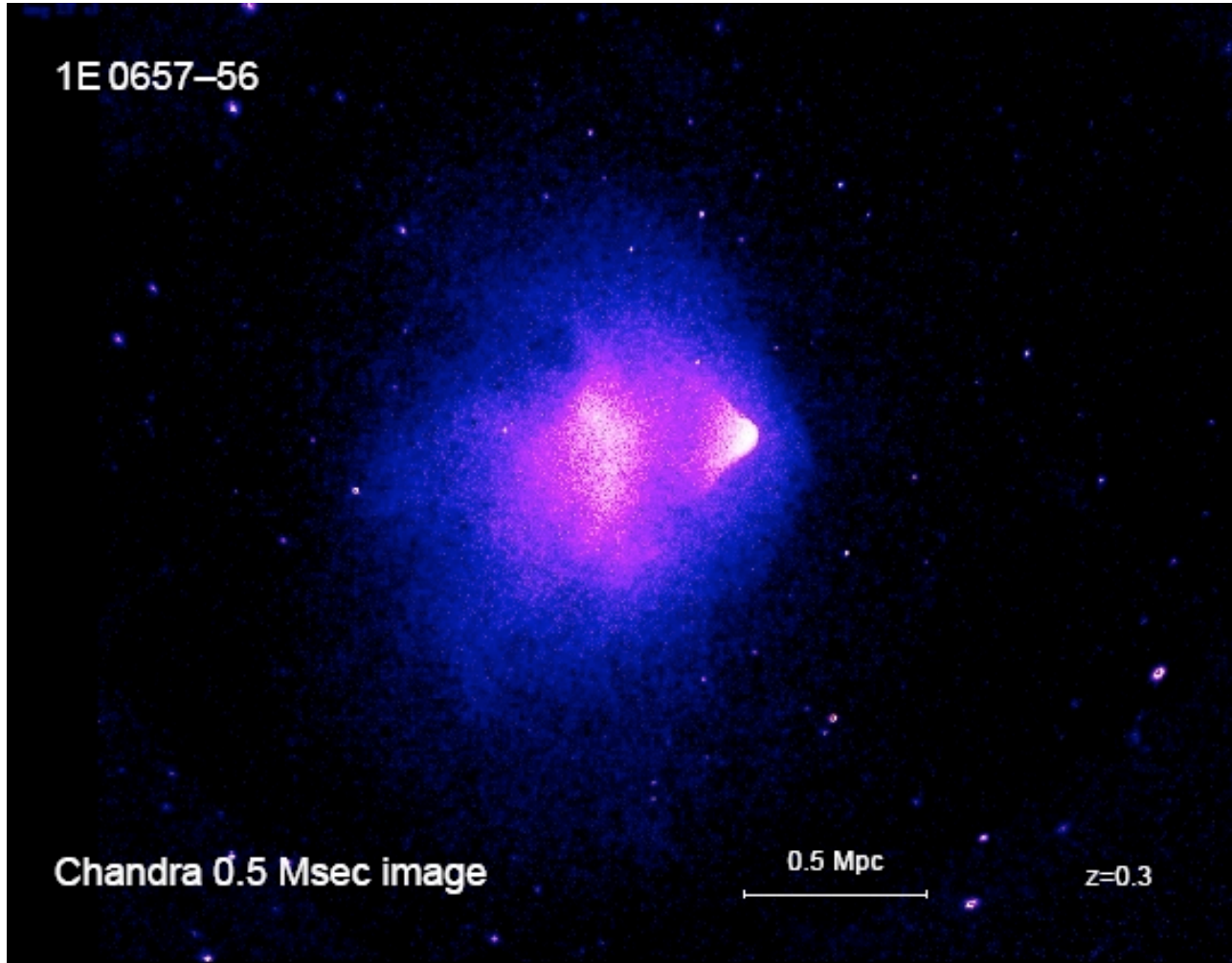


1E 0657-56

Chandra 0.5 Msec image

0.5 Mpc

$z=0.3$



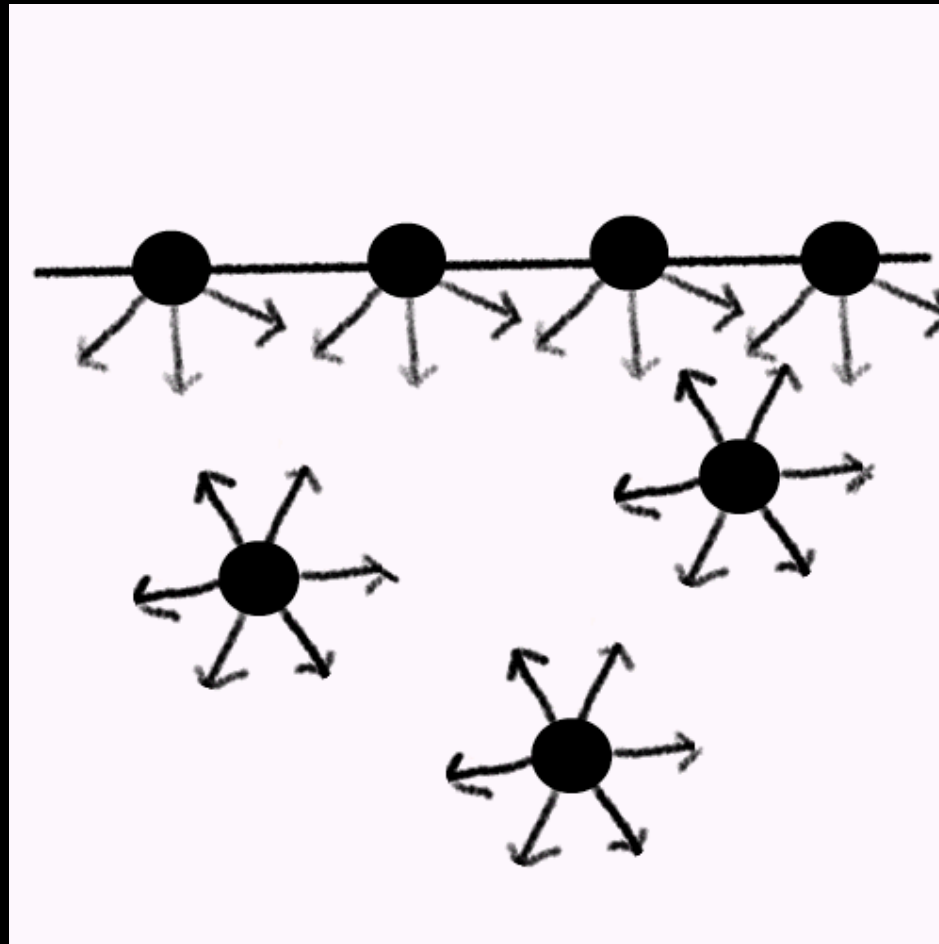


# Charardin



Manet



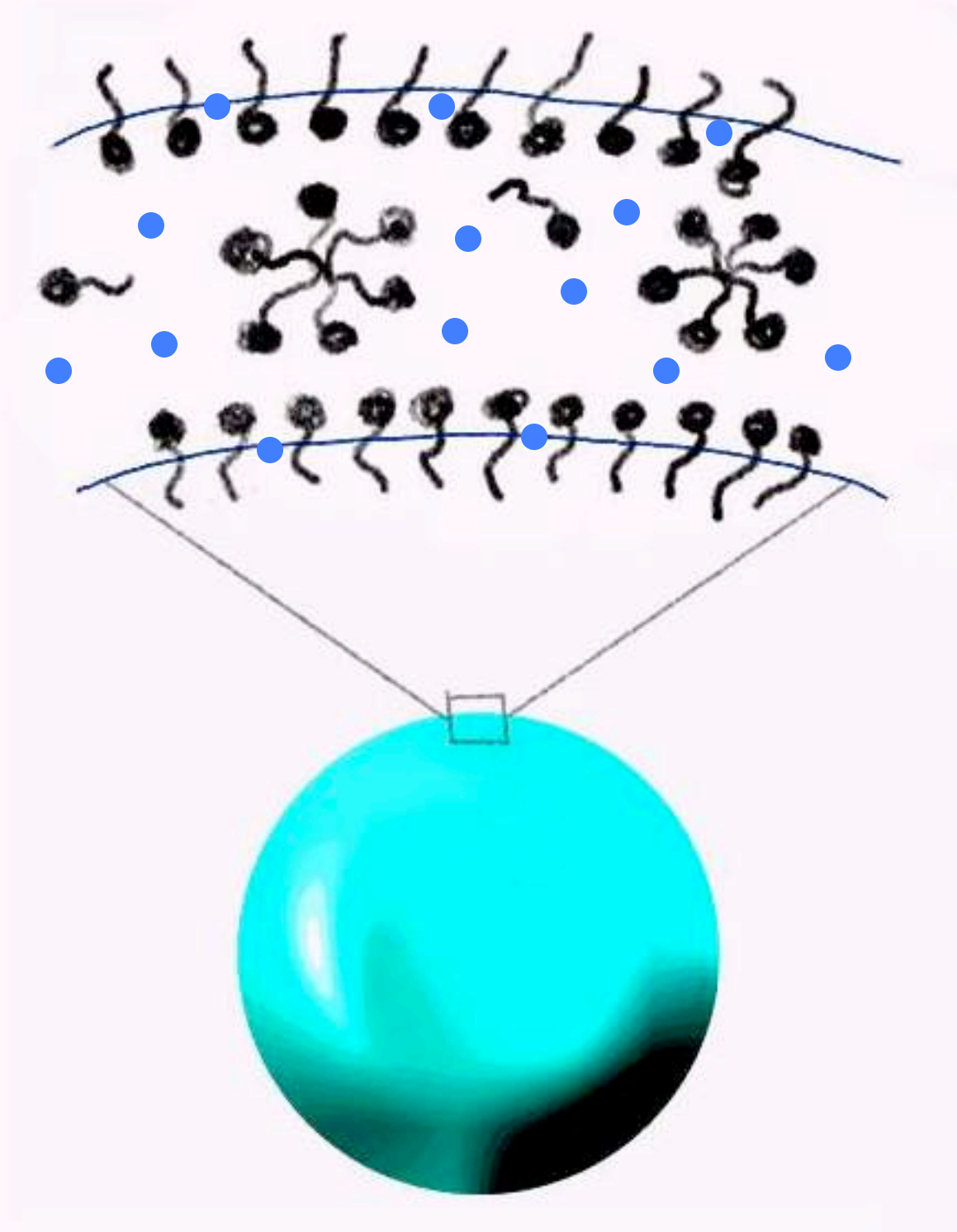


Sketch of the forces between molecules on the surface and in the bulk of a fluid



**Hydrophobic Tail**

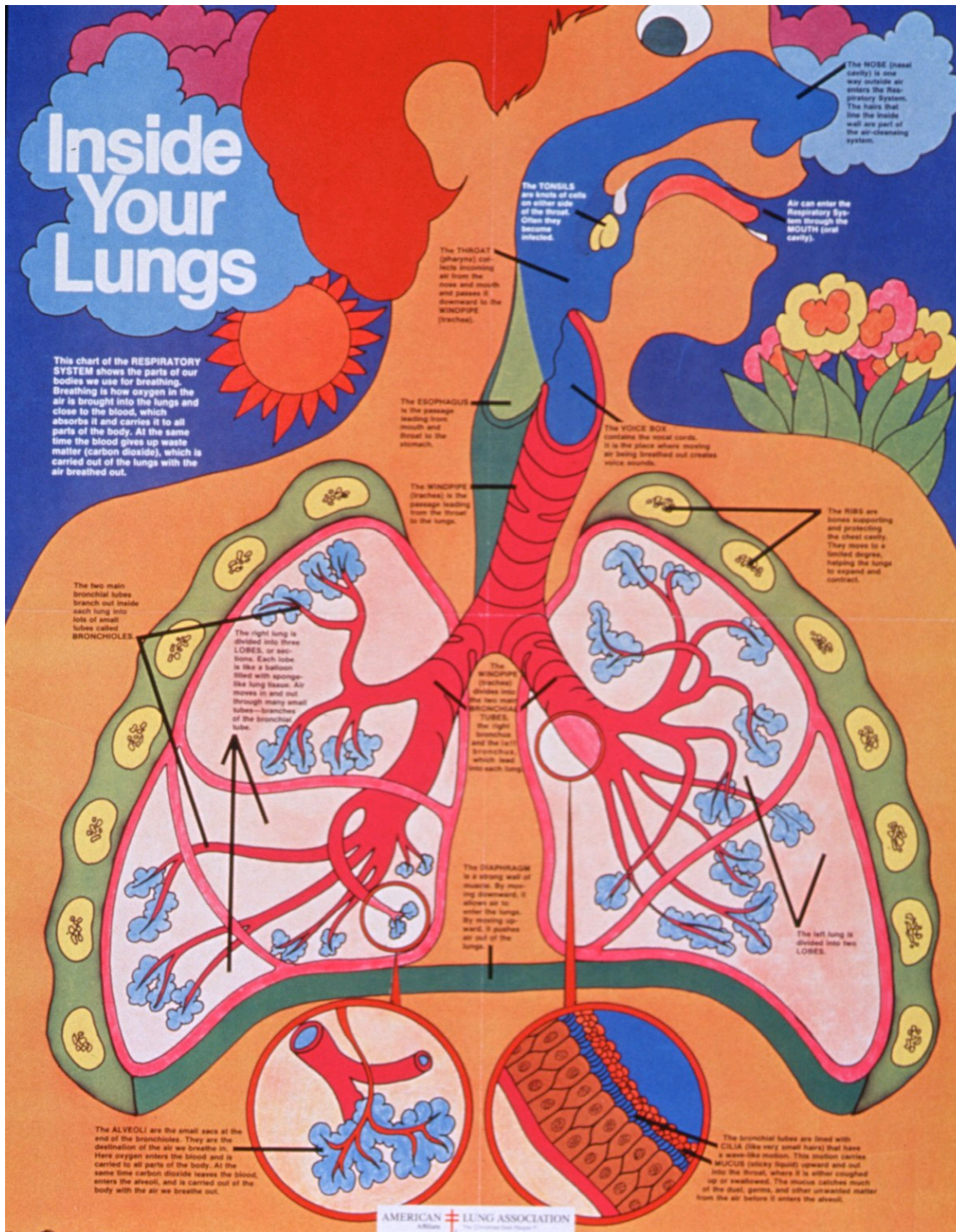
**Hydrophilic Head**



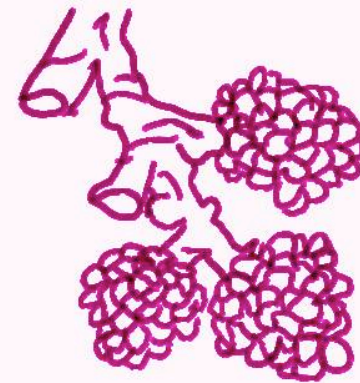


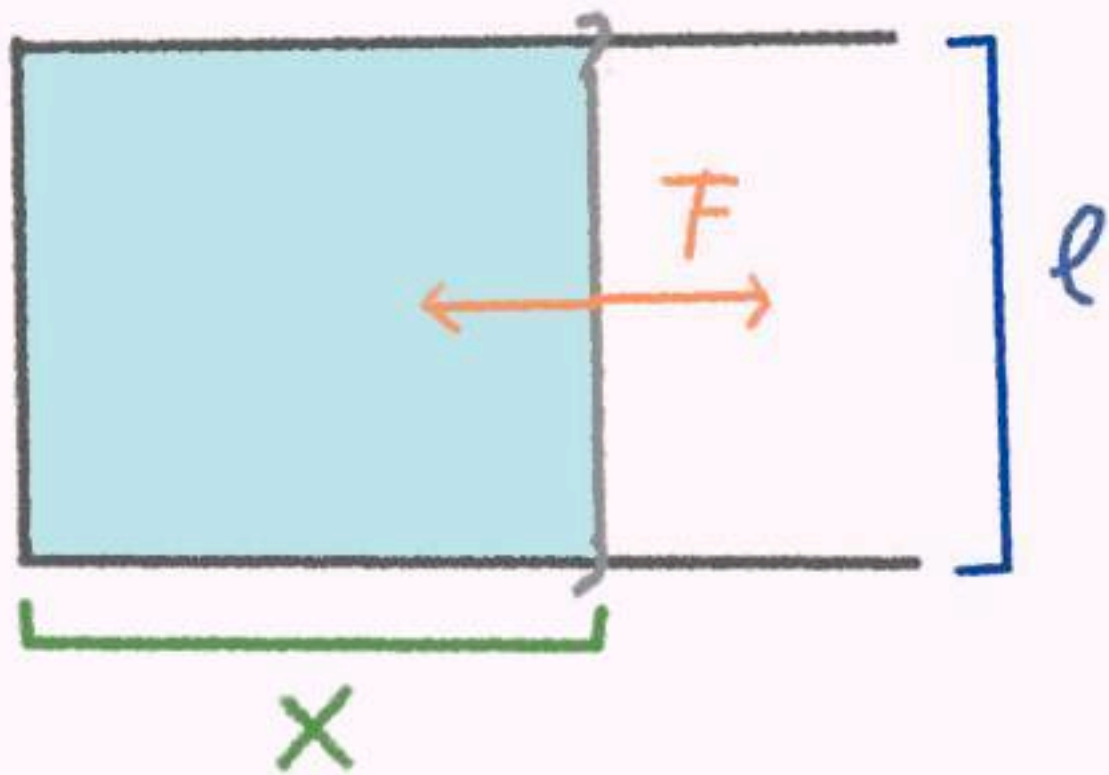
# Inside Your Lungs

This chart of the **RESPIRATORY SYSTEM** shows the parts of our bodies we use for breathing. Breathing is how oxygen in the air is brought into the lungs and close to the blood, which absorbs it and carries it to all parts of the body. At the same time the blood gives up waste matter (carbon dioxide), which is carried out of the lungs with the air breathed out.



## The alveoli in your lungs

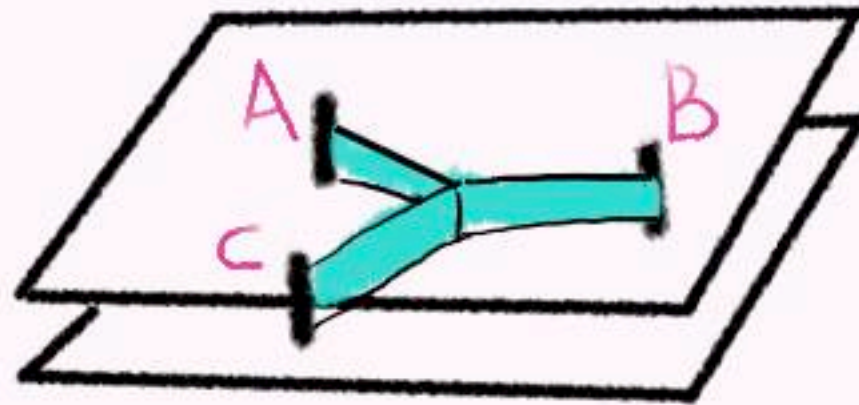




Nature is relaxed..we should be relaxed

This is where I come  
from





The motorway  
problem





A sloth hanging from a branch



Gateway arch in Saint Louis (USA)







Munich Olympic Stadium by Frei Otto (1972)





























